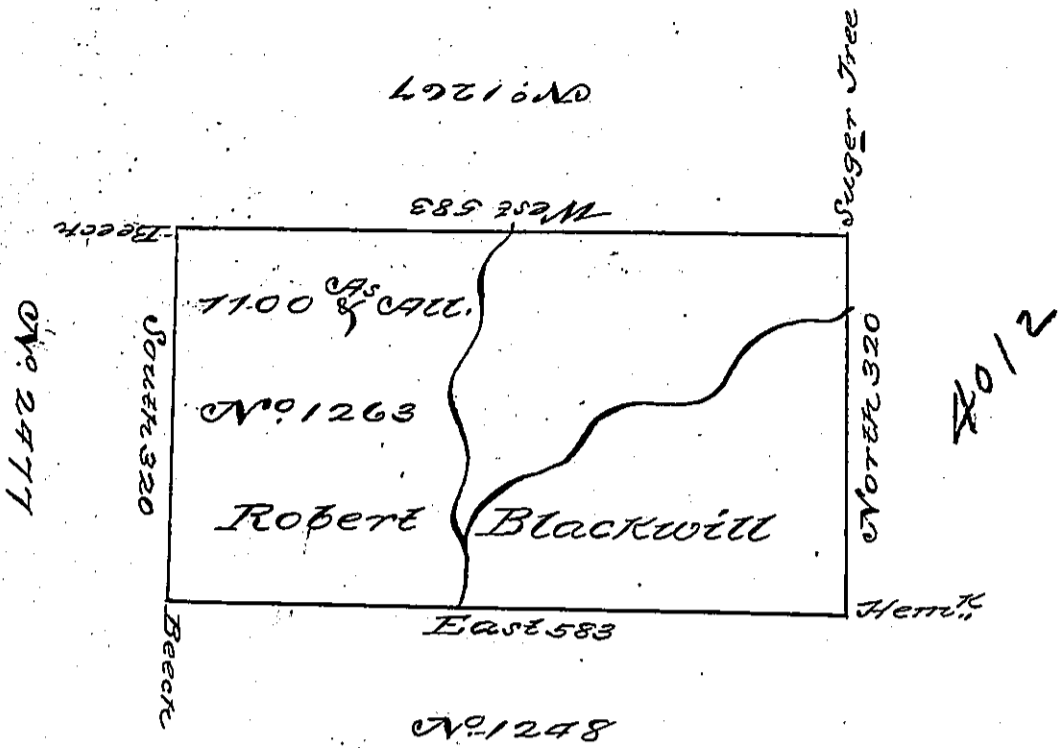


N<sup>o</sup> 116



Situate on the Portage Branch of Sinamoking  
 Creek about Two Miles North of a Big Elk Lick in  
 in North<sup>d</sup> County containing 1100 <sup>as</sup> the usual allowance  
 for Roads &c Surveyed July 16<sup>th</sup> 1793 for Robert Blackwill  
 in pursuance of a Warrant N<sup>o</sup> 1263 bearing date the 26<sup>th</sup>  
 Day of April 1792

Daniel Brodhead Esq<sup>r</sup> & C<sup>y</sup>.

John Canan  
 D.C.

IN TESTIMONY that the above is a copy of the original remaining on file in  
 the Department of Internal Affairs of Pennsylvania, made  
 conformably to an Act of Assembly approved the 16th day of  
 February, 1833, I have hereunto set my Hand and caused  
 the Seal of said Department to be affixed at Harrisburg,  
 this first day of February 1898

*James W. Patton*  
 Secretary of Internal Affairs.